



ERA Monthly Market Analysis

December 2024

www.eraa.org

twitter.com/eraaorg

Introduction

For the production of these statistics in the following report, ERA has teamed up with partners Cirium to provide a comprehensive analysis of ERA's members' performance.

The analysis performed by Cirium is based on schedule data that has been provided by Cirium using SRS analyser and gives a comprehensive overview of the sector.

This report examines the performance of ERA member carriers who report schedule data to Cirium.

Copyright © 2022 LexisNexis Risk Solutions

This document contains the confidential and proprietary information of Cirium and you are prohibited from making copies or sharing unless explicitly authorised.



CIRIUM

www.eraa.org

twitter.com/eraaorg

Cirium, has incorporated schedules data, formerly known as Innovata into its data and analytics powerhouse and is a leading source of airline schedules data covering more than 800 carriers worldwide and is a strategic partner of IATA, the trade association for the world's airlines. Cirium licenses its schedules to clients across the air travel and transportation sectors; builds, hosts and maintains a wide range of electronic timetable and route network mapping solutions; feeds a range of third party aviation schedules analysis tools to airports and other travel players.

Summary

With the Winter Schedule in full swing we see an increase in available seats and a decrease in flights offered compared to December 2023.

The two headline figures are a 1.5% increase in available seats and -1.2% decrease in flights offered in Dec 24 compared to the same month last year.

Comparing flights offered in Dec 2019 to Dec 2024 we still see a decrease of -16% (83,997 vs 70,156).

Average aircraft seating capacity was 88 seats with sector duration at 1hr 21 mins for December. Both in line with the ERA trends across the last 12 months.

Stage length was 694km which is a 1.9% increase compared to the same month last year.

Unique routes operated shows a 2.6% increase compared to Dec 23.

Published schedules for Winter 24/25 (November-April) indicate an increase of 0.6% in total seats and an increase of 2.8% in total flights offered compared to Winter 23/24.

These figures may change as carriers update their schedules.

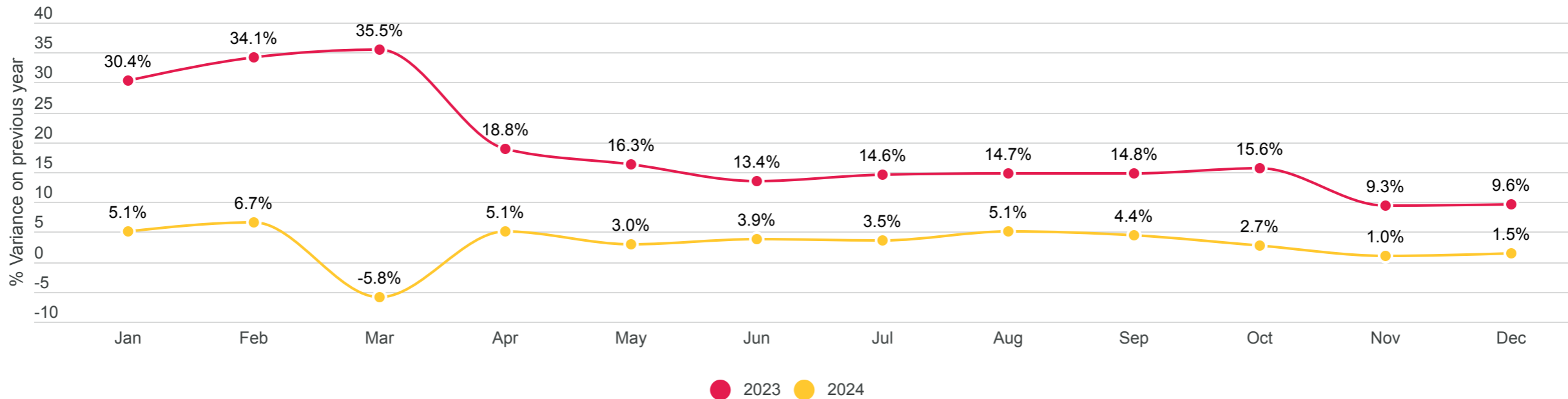
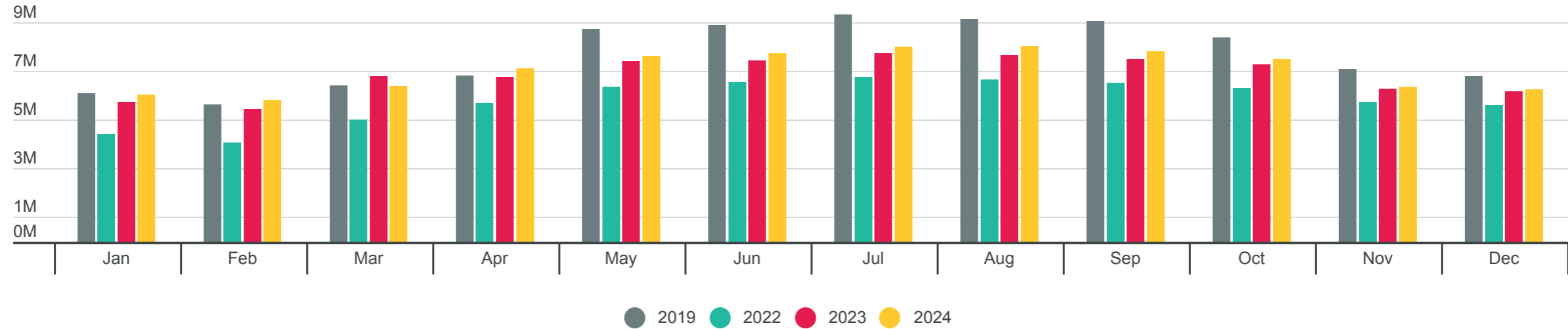
www.eraa.org

twitter.com/eraaorg

Deployed Capacity

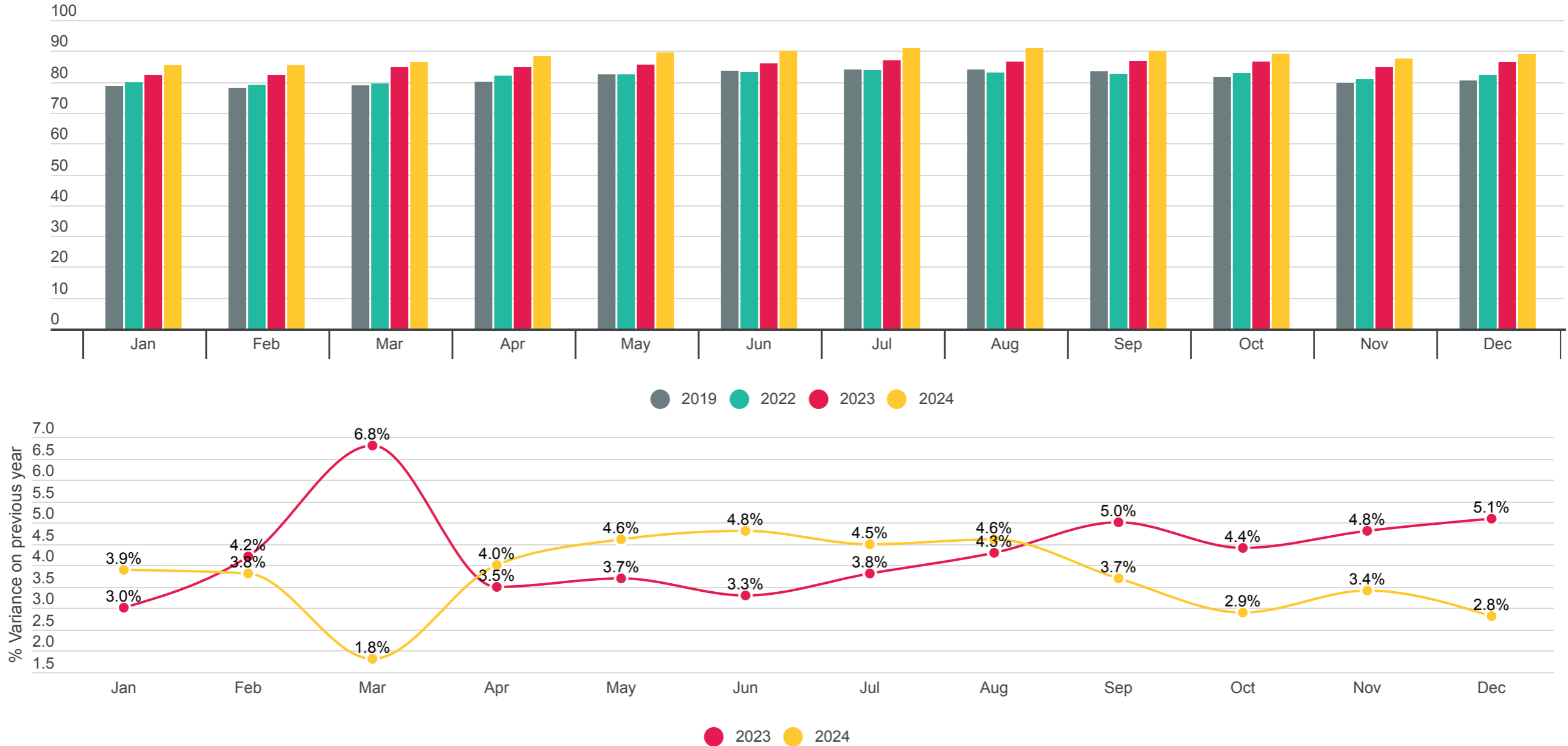
Scheduled seats by ERA carries Jan-Dec 2024

Total Seats



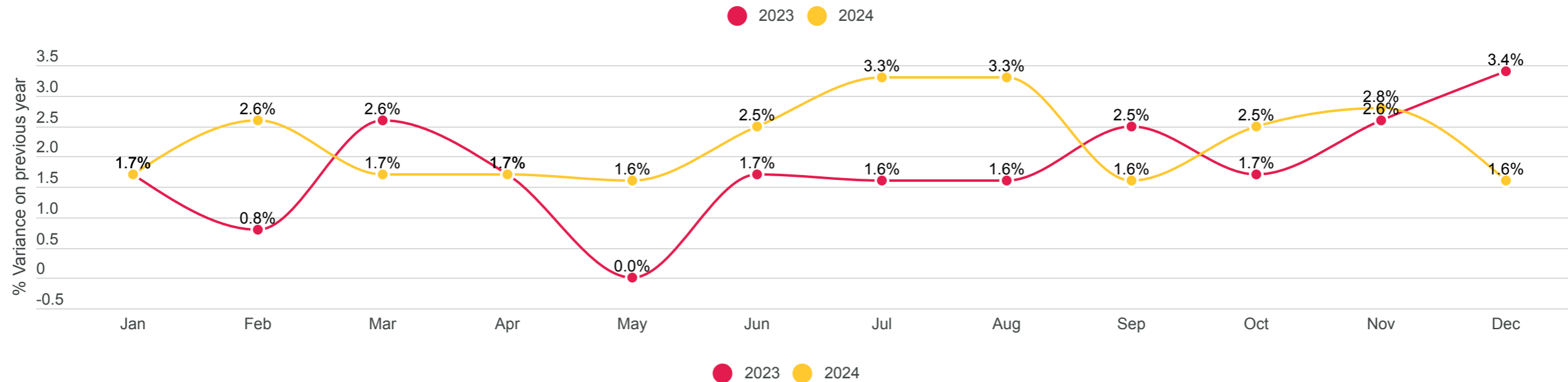
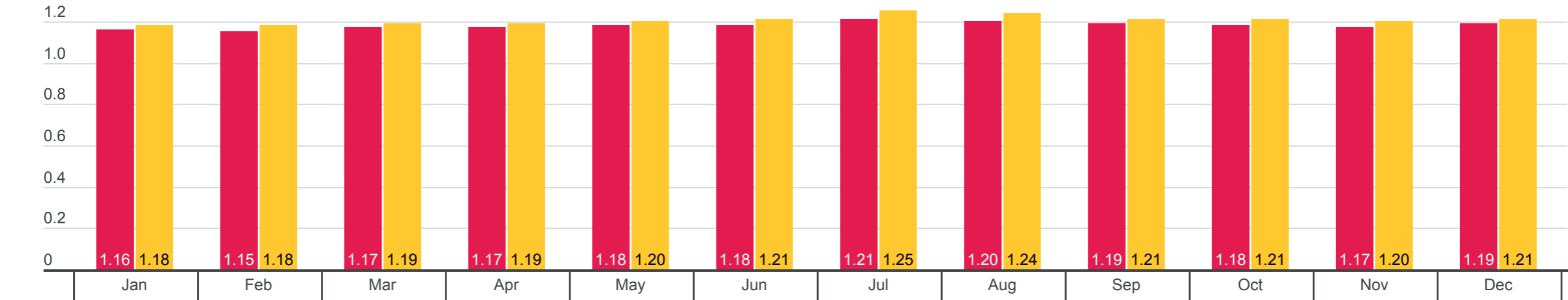
Aircraft Seating Capacity

Average seats per departure



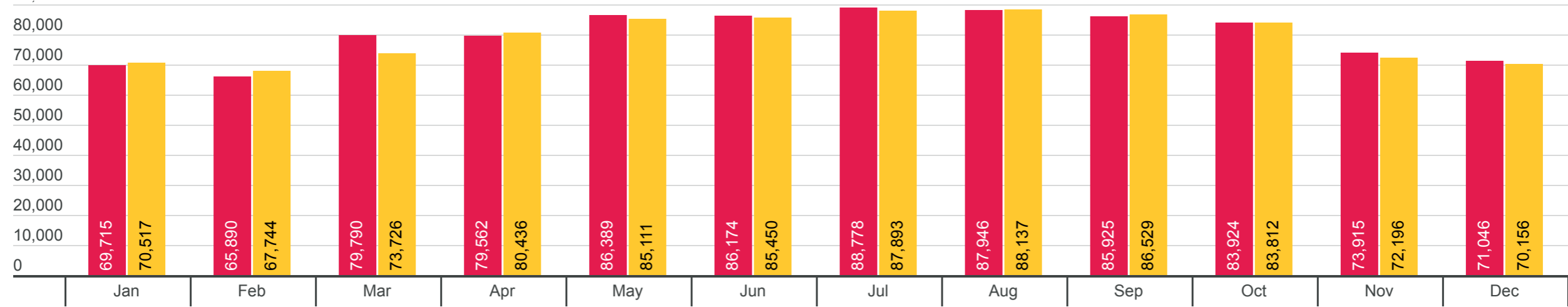
Sector Duration

Average sector duration in hours

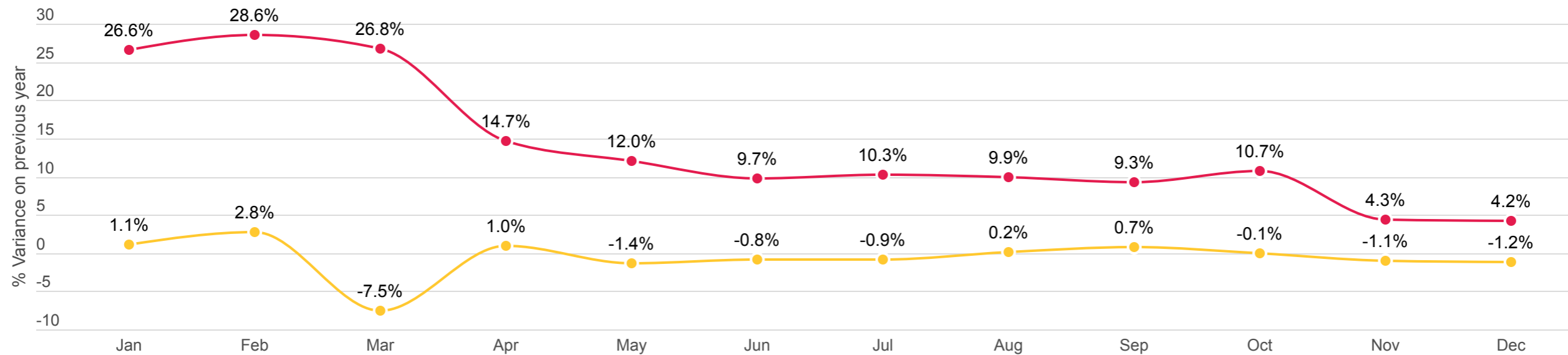


Total Movements

european regions airline association



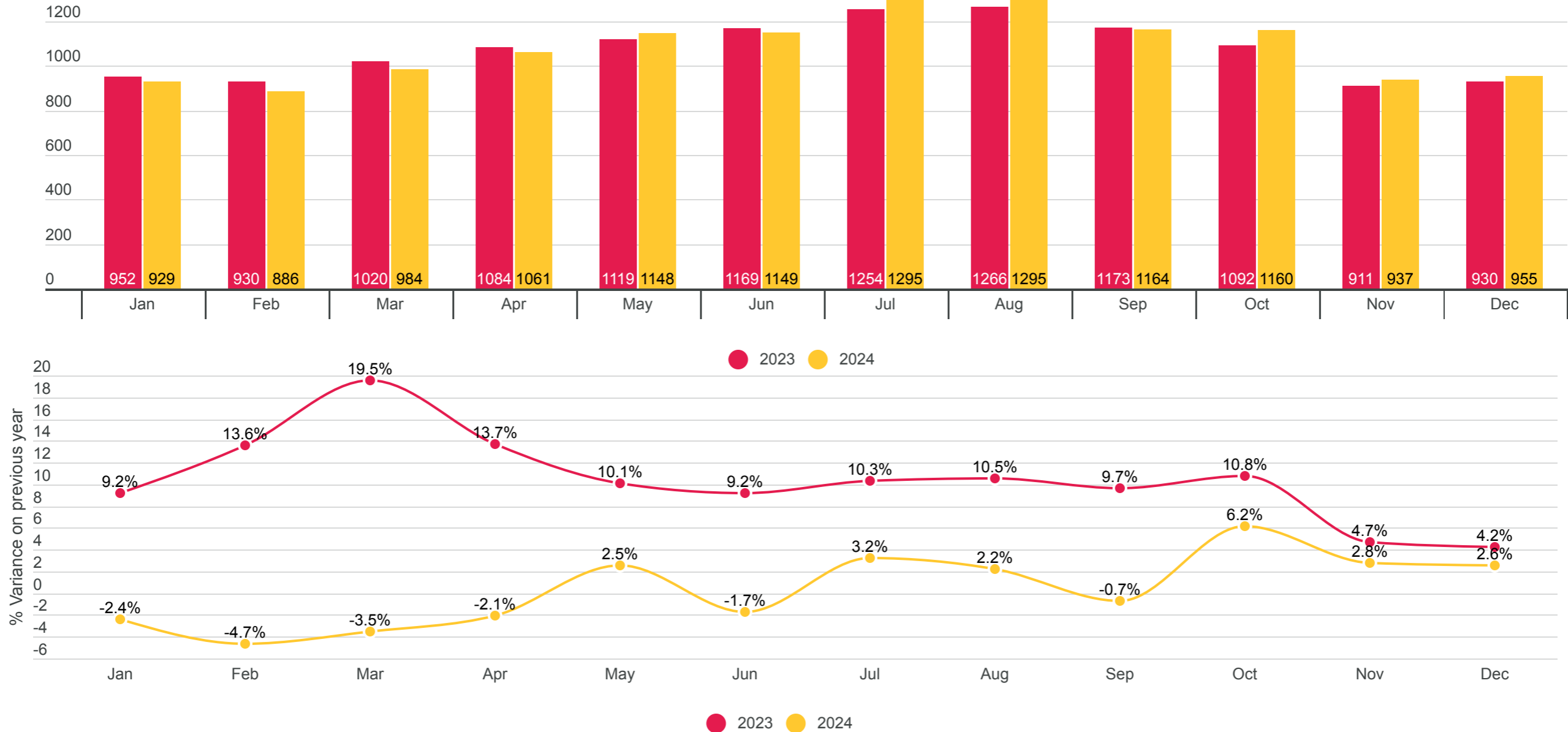
● 2023 ● 2024



● 2023 ● 2024

Route Count

Unique Routes Operated By ERA Member Airlines



Stage Length

Average stage length in kilometres (km)

